



PowerUP™ Wireless Charging Mouse

SOFTWARE USER'S GUIDE

Table of Contents

1 Downloading the Mouse Software

2. Installing the Mouse Software

3. Using the Mouse Software

3A: Button Assignment

3B: Macro Manager

3C: Power Meter

3D: DPI Setting

3E: Lighting

3F: USB Report Rate

3G: Mouse Speed

3H: Double-Click Speed

3I: Wheel Scroll Speed

3J: Game Profiles

1. Downloading the PowerUP Mouse Software

The ENHANCE PowerUP mouse software is required to customize your mouse settings including LED color options and button programming. To download the software, please visit www.enhancegaming.com/support and select your product from **Drivers and Downloads**.

2. Installing the PowerUP Mouse Software

Prior to installing the PowerUP mouse software, please ensure to close all open applications. It is also recommended that any existing mouse application software is uninstalled from the computer before installing the PowerUP mouse software.

1. Download the PowerUP mouse software to your computer. See item 1 above for instructions.
2. Open the folder on your computer containing the downloaded PowerUP mouse software.
3. Double-click on the **ENHANCE PowerUP Wireless Charging Mouse Software Setup.exe** application file to start the installation. Follow the onscreen instructions.
4. Once the installation is complete, click **Finish**. It is recommended that you restart the PC before using the software.
5. The ENHANCE icon will now appear in the taskbar. Double-click the ENHANCE icon to launch the PowerUP mouse software.



3. Using the Mouse Software

A: Button Set
B: Macro Manager
C: Power
D: DPI Setting

E: Lighting
F: USB Report
G: Mouse Speed
H: Double-Click Speed

I: Wheel Scroll Speed
J: Game Profiles



Main Menu Commands:

Reset: Returns the settings to the factory default.

3A: Button Assignment:

Assign a function to any button using the **Button Set** menu option. Select **Top** view or **Side** view to view all of the 7 buttons to be assigned.



The *Left Click* function, the default setting for Button 1, must always be programmed into the mouse. Before changing the profile of the left-click button, the left-click function must be assigned to another button. If an attempt is made to program the left-click button prior to assigning the left click function to another button, the error message below will appear:



3B: Macro Manager

Use the Macro Manager to *Record*, *Modify* or *Delete* a macro. Click **New** to start a new macro.



The PowerUP software assigns a name to the macro found under the *Macros* field. Double-click on a macro to rename it.

Before recording a macro, you can select **Record Delay** to set the delay between keystrokes or **Cycles**. When *Record Delay* is checked, the delays during the recording of the macro will be applied. The recorded delays in milliseconds will appear within the Keys column. Within the *Macro Manager*, the number of cycles can be specified. Check the **Cycles** box and input the number of requested cycles. For example, a macro containing the key sequence F1, F2, 123 and two cycles will output: F1 F2 123 F1 F2 123. To record a macro, within Options click Start REC. All keyboard inputs will be recorded. To end recording, click on **Stop REC**. Select **OK** to save the macro and to close the *Macro Manager*.

The maximum number of supported keystrokes is 34, which includes any mouse commands and delays. Pressing and releasing a key for example will represent two commands. Any macro can be assigned to any mouse button in the *Button Set* menu.



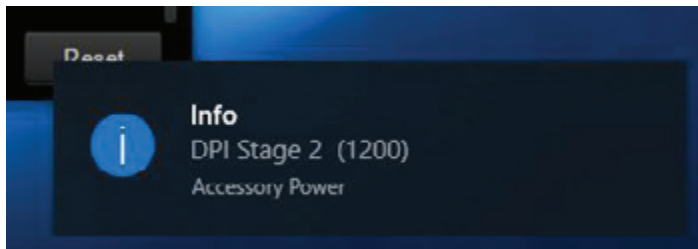
3C: Power Meter

The **Power** meter indicates how much power remains in the PowerUP mouse. To help in managing power see section 3F. USB Report.

3D. DPI Setting

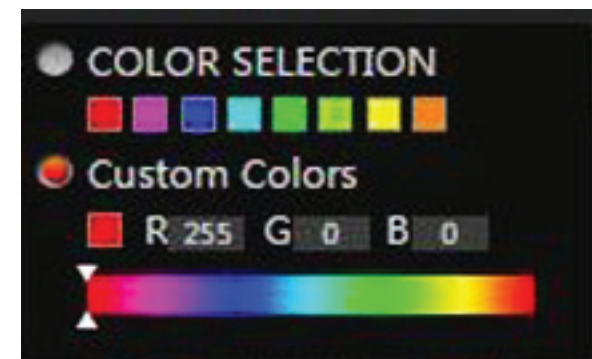
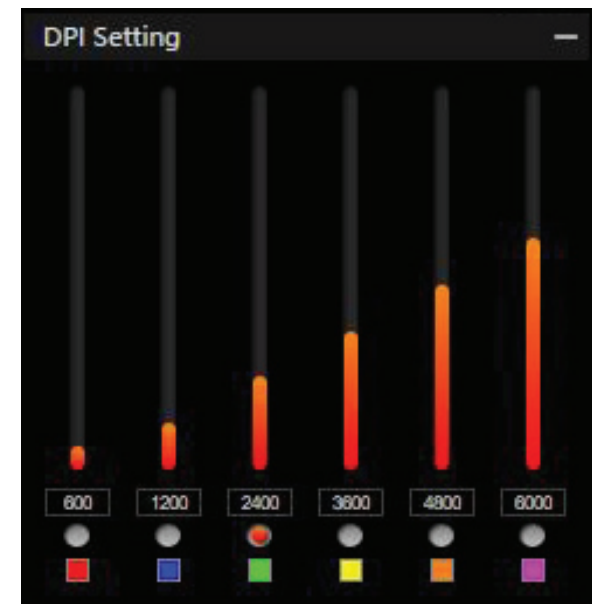
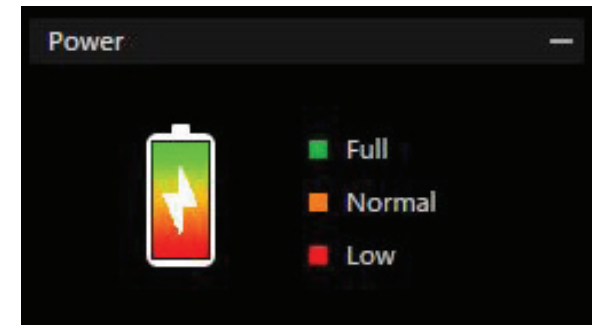
Here you can set individual DPI values by clicking on the bar or entering the desired DPI amount into the DPI field. DPI can be set in increments of 100. The greater the DPI value, the faster the mouse's cursor movement.

The DPI buttons on top of the mouse are used to select the desired DPI setting. When the DPI is changed using the mouse, along with the mouse LED color change, a notification will appear in the lower right corner of your screen.



3E: Lighting

The mouse's color setting for any given DPI value is located beneath each of the DPI buttons. Here is where the color of the LED lighting is selected. To update a color, click on the color to open the color menu. Select a color from the preselected colors or click within the *Custom Colors* to select from thousands of colors.



3F: USB Report

The USB Report rate is the query time between the computer and the mouse. The higher the Hertz (Hz) value, the shorter the time between queries. A higher report rate uses more system resource including faster battery consumption. The lower two report rates extend battery life by having fewer queries and by turning Off the LED.

Click within the **USB Report** meter to adjust the USB report rate. Select from one of four settings.

- 125 Hz, 8 ms: Power saving mode. LED Off
- 250 Hz, 4 ms: Office mode. LED Off
- 500 Hz, 2 ms: Gaming mode: LED On
- 1000 Hz, 1 ms: eSports mode: LED On

3G: Mouse Speed

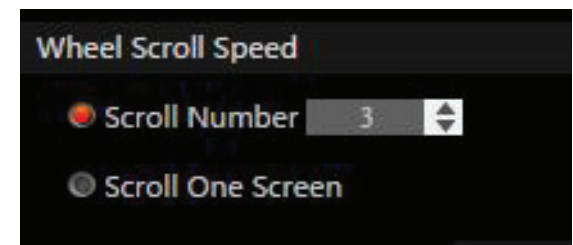
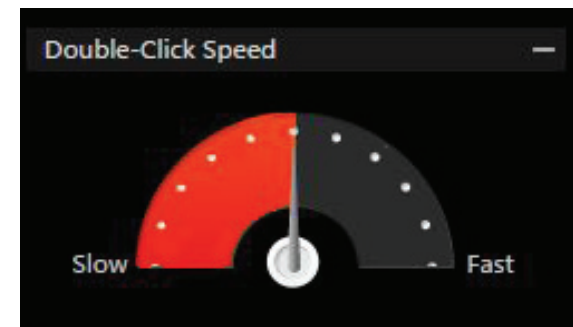
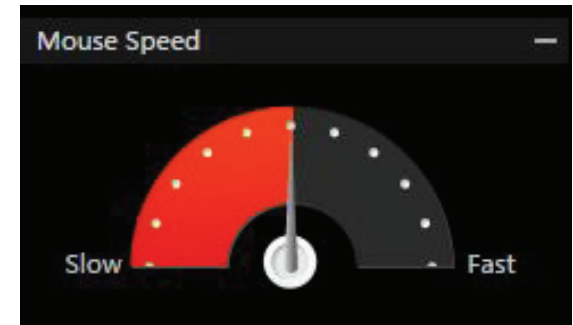
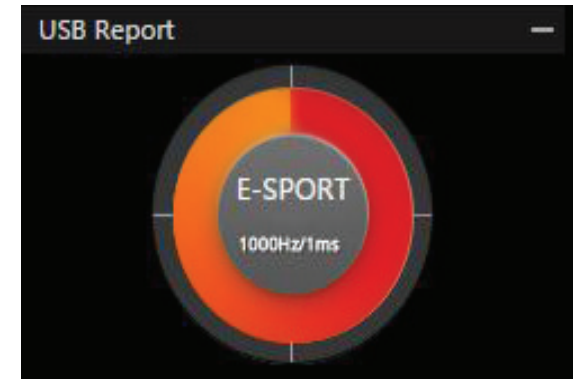
The mouse speed setting has 11 speed values. The higher the value, the faster the cursor will move on the screen with the same amount of mouse movement. Click on the gauge to move the dial and to select the *Mouse Speed*.

3H: Double-Click Speed

Here you can set how far apart two clicks can be while still registering a double-click. The higher the value, the faster the clicks must follow one another to register a double-click. Click on the gauge to move the dial and to select a *Double Click Speed*.

3I: Scroll Speed

When scrolling, the mouse wheel moves the on-screen image up or down at a given rate. This setting allows the Scroll Speed, as represented by the number of rows, to be modified. A higher value will allow for more scrolling with fewer turns of the mouse wheel.



3J: Game Profiles

When different mouse settings are used for various games or applications, *Profiles* allow you to save the mouse settings for each individual game or application. Saving game profiles will allow you to quickly switch between the different settings without having to make manual setting changes.

To create a game profile, proceed as follows:

1. Click on **Profiles** in the lower left corner of the Main Screen.
2. Select a pre-existing profile or click on **New** to create a new profile. To rename a new profile, Double-click in the name field or right-click and select **Edit**.
3. To change profiles, first click on **Profiles** and then click on the desired profile. The desired profile is loaded.
4. To close, click the **X** on the top-right corner of the Configuration field. Additional commands are available by right-clicking on the profile:

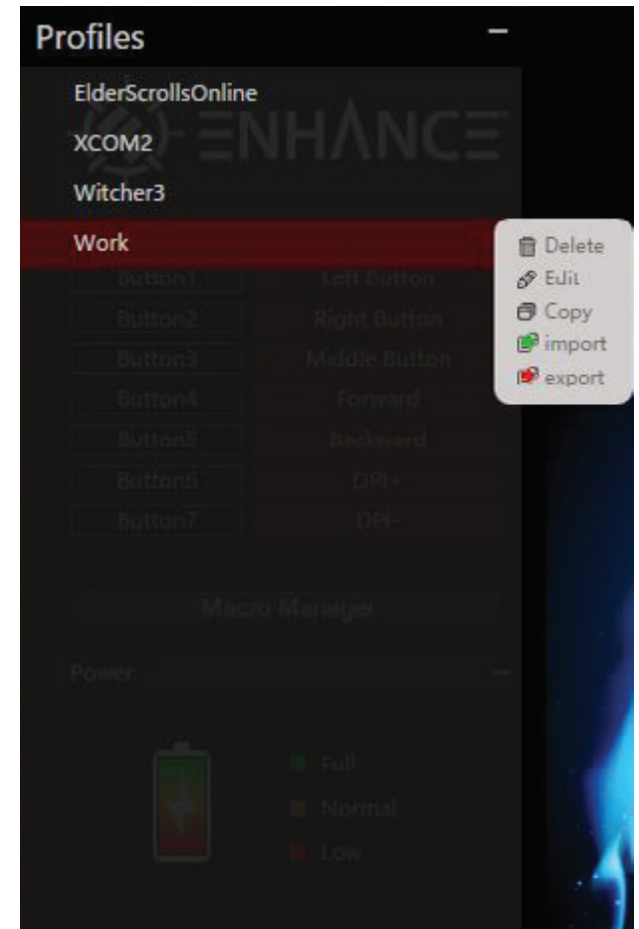
Delete: Delete the profile.

Edit: Make changes to the name.

Copy: Copies the profile, so it can be used as a template to create a similar profile.

Import: Load a saved profile from the hard drive.

Export: Save the profile to the hard drive.





ENHANCE

PowerUP™ Wireless Charging Mouse

MODEL NUMBER: ENPUMSW105BOEW

© 2018 AP Global, Inc. All rights reserved. Accessory Power, the Accessory Power logo, ENHANCE, the ENHANCE logo, PowerUP and other marks and logos are either registered trademarks or trademarks of AP Global in the United States and/or other countries. All other trademarks are the property of their respective owners.